

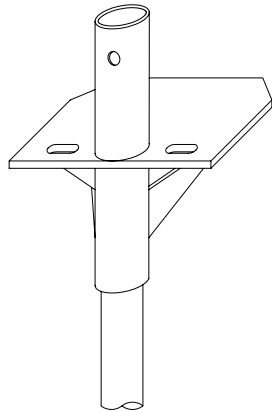
**INSTALLATION  
PROCEDURE FOR  
TRU-LIFT BRACKETS**



**STEP 1**

**INSTALL PIER:**

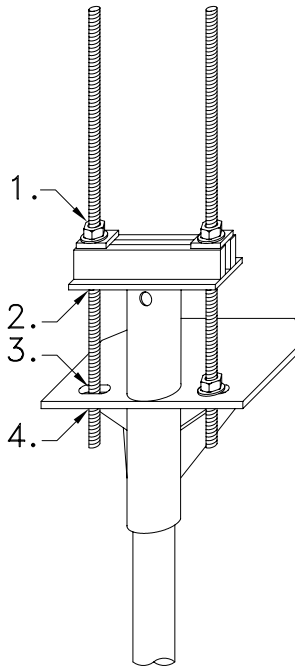
Pier should extend through the top of bracket and be close enough to footing to allow bracket seat to sit under footing.



**STEP 2**

**SET BRACKET:**

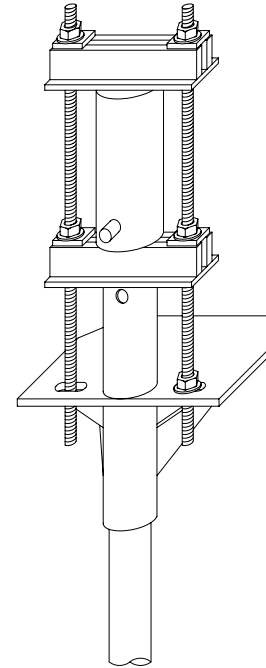
Slide bracket onto pier and position to place bracket seat under footing.



**STEP 3**

**INSTALL INSERT SLIDER BLOCK AND THREADED RODS:**

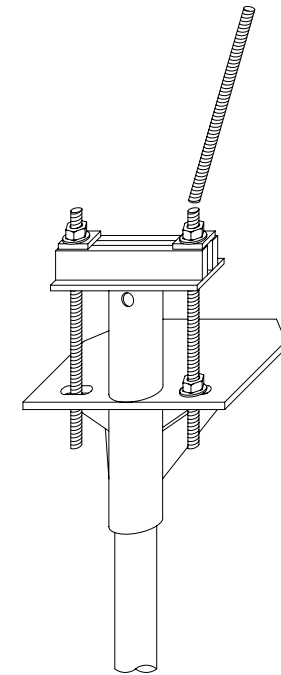
Put washers and nuts onto threaded bar (enough for task).  
COMPRESSION LOADING: Nuts at positions 1 & 4, both rods.  
TENSION LOADING: Nuts at 1,2,3, & 4, both rods.



**STEP 4**

**PLACE LIFTING JACK/BLOCK IN POSITION AND APPLY LOAD:**

Hydraulically apply lift. When lift is completed, tighten off nuts, remove jack and lifting block.



**STEP 5**

**COMPLETE:**

Cut threaded rods to required length.

		BH	RR	22/11/05
NUMBER	REVISION	DRWN BY	CHECKED	DATE



TITLE: INSTALLATION PROCEDURE FOR TRU-LIFT BRACKETS		
SCALE	DRAWING NUMBER	REV.
N.T.S.	FR250LB2	A